

ISOLADORES SUSPENSOS

SFH-1 & SFH-2 – Mola e fibra de vidro

NEW

Patented Self Centering Cap Epoxy Powder Coated Bracket and Spring Coil

How the self centering no short cap works:

Indexed steps in spring cap correspond to standard washer diameters for the appropriate rod diameter. The washer and rod stay centered in the cap

Description

Kinetics Model SFH Vibration Isolation Hangers consist of freestanding, large diameter, laterally stable steel springs in series with a precompressed molded fiber glass insert assembled into a stamped or welded hanger bracket. To assure stability, the spring element has a minimum lateral spring stiffness of 1.0 times the rated vertical stiffness. Hangers will allow support rod misalignment through a 30° arc without short circuiting. Isolation brackets will carry a 500% overload without failure. Model SFH hangers are superior to hangers which incorporate a spring only, that can transmit noise through the all metal construction, and hangers incorporating noise stop pads only, that can transmit low frequency vibration which a spring would isolate. Hangers are available in deflections 1.04" to 2.20" (26 to 56 mm), and in capacities from 35 to 3500 lbs. (16 to 1588 kg). Kinetics Model SFH combination hangers are recommended for the isolation of vibration produced by suspended mechanical equipment, low speed suspended fans, transformers, ductwork, piping, etc.



Application

Kinetics Model SFH hangers are recommended for use near critically quiet areas for isolating any suspended source of both audible and inaudible noise and vibration. Suspended mechanical equipment such as in-line fans, cabinets fans, and piping and ductwork in close proximity to mechanical equipment are typical uses of Model SFH hangers.

High sound transmission loss ceiling systems can be effectively isolated by the use of Model SFH hangers in the ceiling suspension system. This hanger model is particularly suitable for use in isolated ceiling systems used to shield spaces from mechanical equipment rooms, flyover aircraft, and similar sound isolation involving predominately low frequency noise.

Standard Model SFH hangers are shipped fully assembled and ready for installation in threaded rod suspension systems.

Model SFH hangers are available in a wide range of load and static deflection selections and can be provided with labor saving accessories for adaptation to wire or strap suspension systems, and may be preloaded, or provided with plates for ease in erecting piping at a fixed elevation.

Specifications

Vibration isolators for suspended equipment with minimum static deflection requirement exceeding .4" (10mm), and where both high and low frequency vibration is to be isolated, shall be hangers consisting of a laterally stable steel spring in series with a precompressed molded fiber glass insert, complete with a load plate and assembled in a stamped or welded steel bracket.

The fiber glass insert shall be individually coated with a flexible, moisture impervious elastomeric membrane. The insert shall be molded from glass fibers with fiber diameters not exceeding .00027" (6.8 microns) and with a modulus of elasticity of 10.5 million PSI (738,223 kg/cm²).

Natural frequency of fiber glass vibration isolators shall be essentially constant for the operating load range of the supported equipment.

The spring element shall have a minimum lateral stiffness of 1.0 times the rated vertical stiffness.

Vibration isolators shall be color coded or otherwise identified to indicate load capacity.

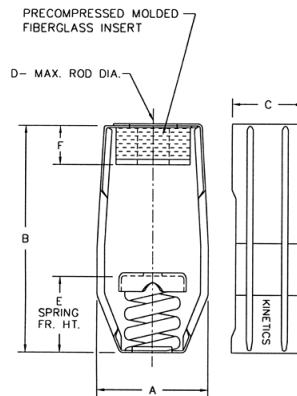
The hanger bracket shall be designed to carry a 500% overload without failure and to allow support rod misalignment through a 30° arc without metal-to-metal contact or other short circuit.

The hanger bracket shall incorporate spring caps with indexed steps which correspond to the washer diameter of appropriately sized hanger rod to keep the rod centered in the spring cap and reduce rod misalignment. The spring caps are protected under U.S. patent number 5,653,426.

Isolation hangers shall be selected by the manufacturer for each specific application to comply with deflection requirements as shown on the Vibration Isolation Schedule or as indicated on the project documents.

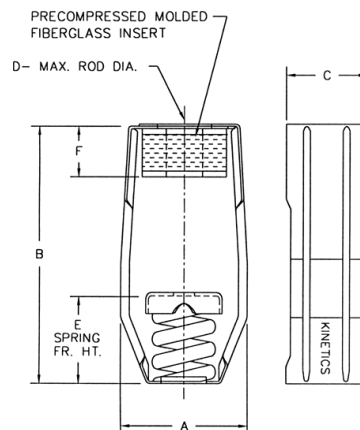
The combination isolation hanger assembly with fiber glass insert shall be Model SFH, as manufactured by Kinetics Noise Control, Inc.

SFH-1-35/805



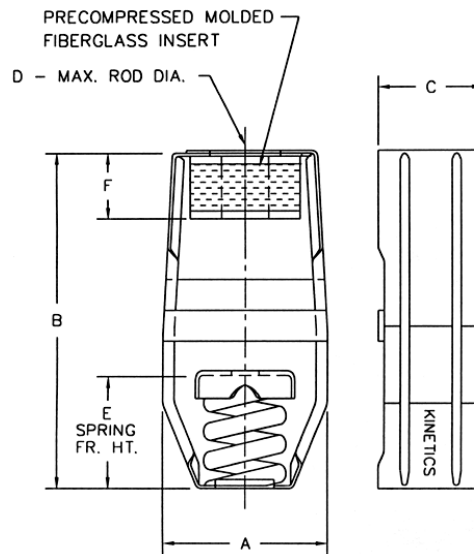
Spring Type	Spring Color	Rated Load lb/kg	Rated Defl. in/mm	A in/mm	B in/mm	C in/mm	D in/mm	E in/mm	F in/mm
SFH-1-35	Blue	35/16	1.71/43	3.69/94	7.38/187	2.25/57	.50/13	3.00/75	1.13/29
SFH-1-70	Green	70/32	1.62/41	3.69/94	7.38/187	2.25/57	.50/13	3.00/75	1.13/29
SFH-1-125	Gray	125/57	1.58/40	3.69/94	7.38/187	2.25/57	.50/13	3.00/75	1.13/29
SFH-1-245	Brown	245/111	1.50/38	3.69/94	7.38/187	2.25/57	.50/13	3.00/75	1.13/29
SFH-1-370	Orange	370/168	1.16/29	3.69/94	7.38/187	2.25/57	.50/13	3.00/75	1.13/29
SFH-1-500	Beige	500/227	1.09/28	3.69/94	7.38/187	2.25/57	.50/13	3.00/75	1.13/29
SFH-1-600	Chrome	600/273	1.04/26	3.69/94	7.38/187	2.25/57	.50/13	3.00/75	1.13/29
SFH-1-700	Beige/White	700/318	1.06/27	3.69/94	7.38/187	2.25/57	.50/13	3.00/75	1.13/29
SFH-1-805	Chrome/White	805/366	1.07/27	3.69/94	7.38/187	2.25/57	.50/13	3.00/75	1.13/29

SFH-1-250/1000



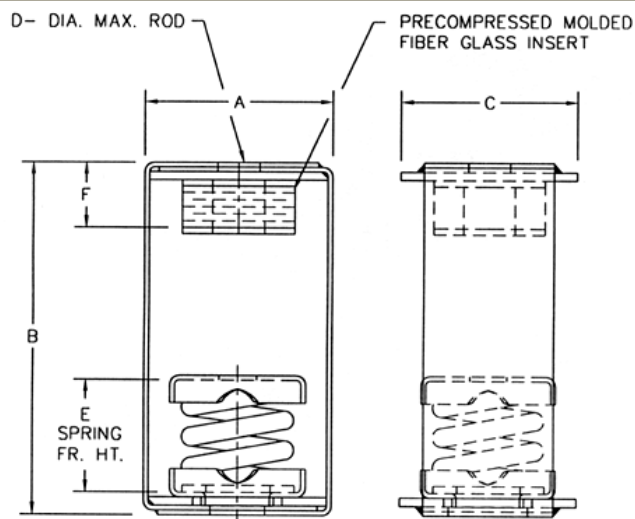
Spring Type	Spring Color	Rated Load lb/kg	Rated Defl. in/mm	A in/mm	B in/mm	C in/mm	D in/mm	E in/mm	F in/mm
SFH-1-250	Blue	250/114	1.89/48	5.58/142	8.59/218	3.63/92	1.00/25	4.00/100	1.50/38
SFH-1-450	Green	450/205	1.67/42	5.58/142	8.59/218	3.63/92	1.00/25	4.00/100	1.50/38
SFH-1-625	Black	625/284	1.60/41	5.58/142	8.59/218	3.63/92	1.00/25	4.00/100	1.50/38
SFH-1-800	Gray	800/364	1.50/38	5.58/142	8.59/218	3.63/92	1.00/25	4.00/100	1.50/38
SFH-1-1000	Red	1000/455	1.23/31	5.58/142	8.59/218	3.63/92	1.00/25	4.00/100	1.50/38

SFH-1-1250/1700



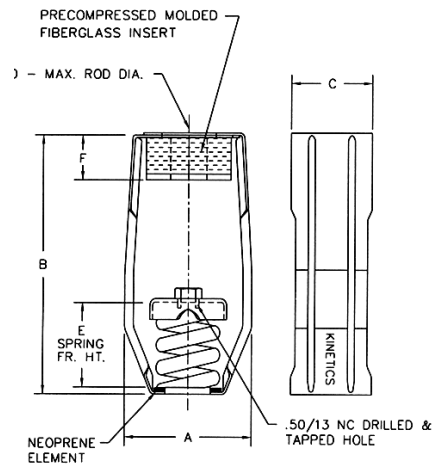
Spring Type	Spring Color	Rated Load lb/kg	Rated Defl. in/mm	A in/mm	B in/mm	C in/mm	D in/mm	E in/mm	F in/mm
SFH-1-1250	Brown	1250/568	1.11/28	5.58/142	8.59/218	3.63/92	1.00/25	4.00/100	1.50/38
SFH-1-1700	Orange	1700/773	1.11/28	5.58/142	8.59/218	3.63/92	1.00/25	4.00/100	1.50/38

SFH-1-2200/3500



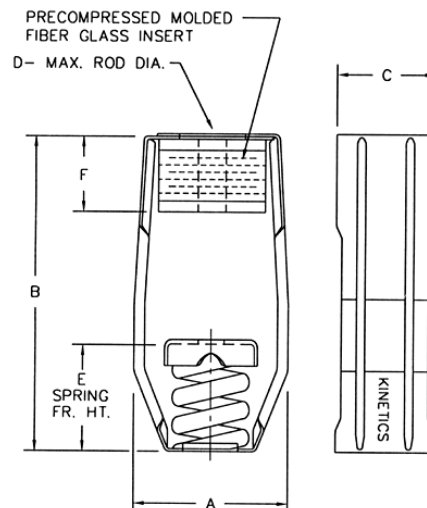
Spring Type	Spring Color	Rated Load lb/kg	Rated Defl. in/mm	A in/mm	B in/mm	C in/mm	D in/mm	E in/mm	F in/mm
SFH-1-2200	Orange/Gray	2200/998	1.17/30	5.00/127	9.50/241	4.75/121	1.00/25	4.00/102	2.00/51
SFH-1-2465	Blue	2465/1118	1.19/30	5.00/127	9.50/241	4.75/121	1.00/25	4.00/102	2.00/51
SFH-1-2865	Blue/Gray	2865/1300	1.09/28	5.00/127	9.50/241	4.75/121	1.00/25	4.00/102	2.00/51
SFH-1-3500	Blue/Brown	3500/1588	1.11/28	5.00/127	9.50/241	4.75/121	1.00/25	4.00/102	2.00/51

SFH-2-35/220



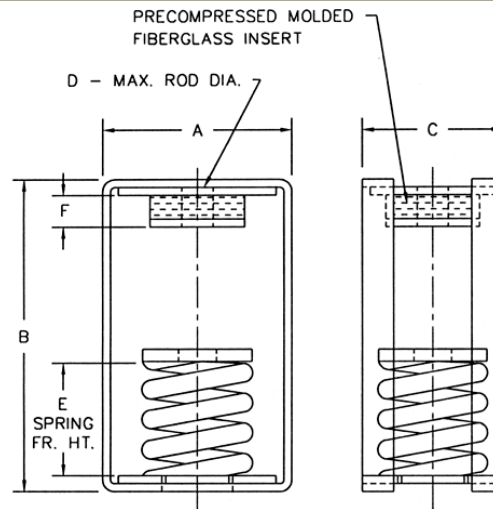
Spring Type	Spring Color	Rated Load lb/kg	Rated Defl. in/mm	A in/mm	B in/mm	C in/mm	D in/mm	E in/mm	F in/mm
SFH-2-35	Blue	35/16	2.05/52	3.69/94	7.38/187	2.25/57	.50/13	4.38/111	1.13/29
SFH-2-70	Green	70/32	2.07/53	3.69/94	7.38/187	2.25/57	.50/13	4.38/111	1.13/29
SFH-2-120	Gray	120/55	2.10/53	3.69/94	7.38/187	2.25/57	.50/13	4.38/111	1.13/29
SFH-2-220	Brown	220/100	2.13/54	3.69/94	7.38/187	2.25/57	.50/13	4.38/111	1.13/29

SFH-2-260/1200



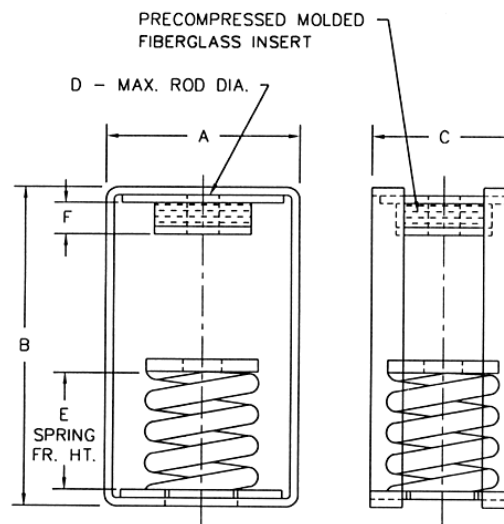
Spring Type	Spring Color	Rated Load lb/kg	Rated Defl. in/mm	A in/mm	B in/mm	C in/mm	D in/mm	E in/mm	F in/mm
SFH-2-260	Blue	260/118	2.20/56	5.58/142	8.59/218	3.63/92	1.00/25	4.00/100	2.00/50
SFH-2-465	Green	465/211	2.00/50	5.58/142	8.59/218	3.63/92	1.00/25	4.00/100	2.00/50
SFH-2-720	Black	720/328	1.91/49	5.58/142	8.59/218	3.63/92	1.00/25	4.00/100	2.00/50
SFH-2-850	White	850/386	2.00/50	5.58/142	8.59/218	3.63/92	1.00/25	4.25/108	2.00/50
SFH-2-1025	Beige	1025/466	1.81/46	5.58/142	8.59/218	3.63/92	1.00/25	4.25/108	2.00/50
SFH-2-1200	Chrome	1200/546	1.78/45	5.58/142	8.59/218	3.63/92	1.00/25	4.50/114	2.00/50

SFH-2-2000/2500



Spring Type	Spring Color	Rated Defl. in/mm	A in/mm	B in/mm	C in/mm	D in/mm	E in/mm	F in/mm
SFH-2-2000	Orange	2.05/53	6.00/152	12.00/305	3.63/92	1.00/25	7.00/178	1.25/32
SFH-2-2500	Blue	2.06/54	6.00/152	12.00/305	3.63/92	1.00/25	7.00/178	1.25/32

SFH-2-2750/3250



Spring Type	Spring Color	Rated Load lb/kg	Rated Defl. in/mm	A in/mm	B in/mm	C in/mm	D in/mm	E in/mm	F in/mm
SFH-2-2750	Blue/Blue	2750/1245	2.09/53	6.00/152	12.00/305	6.00/152	1.00/25	7.00/178	1.25/32
SFH-2-3025	Blue/Grn	3025/1375	2.11/54	6.00/152	12.00/305	6.00/152	1.00/25	7.00/178	1.25/32
SFH-2-3250	Blu/Blk	3250/1475	2.12/54	6.00/152	12.00/305	6.00/152	1.00/25	7.00/178	1.25/32



Kinetics Noise Control, Inc. is continually upgrading the quality of our products. We reserve the right to make changes to this and all products without notice.